



**MOVE INN ESTATES**  
MAKING THE RIGHT MOVE



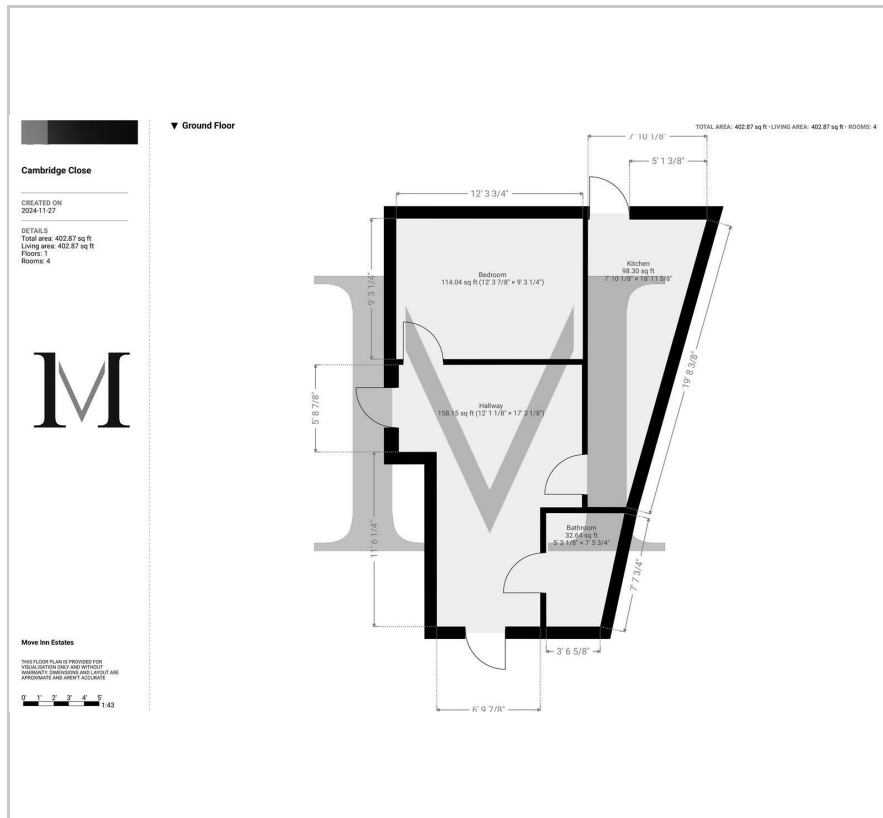
**Cambridge Close**

, Hounslow, TW4 7BG

£1,450 Per Month



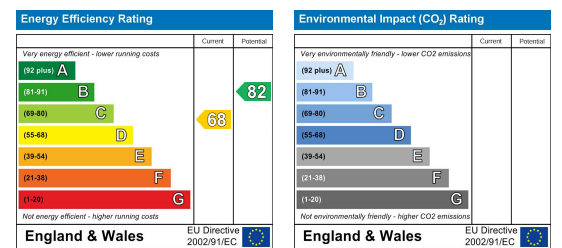
## Floor Plan



## Area Map



## Energy Efficiency Graph



## Viewing

Please contact our Move Inn Estates - Sales Office on 0208 574 4966 if you wish to arrange a viewing appointment for this property or require further information.



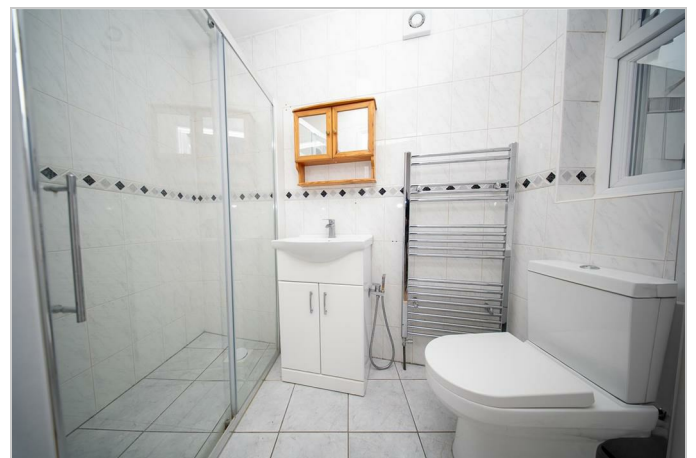
This modern one-bedroom ground floor apartment offers the perfect blend of comfort and convenience, making it ideal for professionals or couples. The property boasts a spacious living area, a fully fitted kitchen with ample storage, and a contemporary bathroom with a standing shower.

The rent is inclusive of council tax and water, with electricity being the only additional cost, managed through an easy-to-use top-up meter system.

Situated in a prime location, the apartment is within easy reach of Hounslow West and Hounslow Central stations, providing excellent transport links via the Piccadilly Line. Local bus services and quick access to the A4/M4 make commuting a breeze.

Residents will enjoy being close to a variety of local amenities, including shops, supermarkets, and restaurants, as well as the open green spaces of Beaversfield Park. Hounslow High Street is also nearby, offering an array of leisure and retail options.

This is an excellent opportunity to enjoy modern living in a vibrant and well-connected area. Arrange a viewing today and see all this apartment has to offer!



These particulars, whilst believed to be accurate are set out as a general outline only for guidance and do not constitute any part of an offer or contract. Intending purchasers should not rely on them as statements of representation of fact, but must satisfy themselves by inspection or otherwise as to their accuracy. No person in this firm's employment has the authority to make or give any representation or warranty in respect of the property.